



GAUTENG

SINCE 1964

*Optimizing your assets*

# INFO PACK

## TIMED ONLINE AUCTION



### ONLINE BIDDING OPENS:

Wednesday, 13 August 2025 @ 12:00

### ONLINE BIDDING CLOSES:

Thursday, 14 August 2025 @ 12:00

### AUCTION ADMINISTRATOR

Chanél Tame

[chanel@vansauctions.co.za](mailto:chanel@vansauctions.co.za)

086 111 8267

# PICTURESQUE GAME FARM WITH PANORAMIC VIEWS, ON THE FOOT OF THE STEENKAMPSBERG MOUNTAINS LYDENBURG, MPUMALANGA



## How to register:

Bidders to register online (visit our website [www.vansauctions.co.za](http://www.vansauctions.co.za))  
or email [chanel@vansauctions.co.za](mailto:chanel@vansauctions.co.za)

Registration fee of R 100,000 only payable via EFT only,  
FICA documents required to be able to register.

## Please Note:

**Online Bidding Opens:** 12:00 on Wednesday, 13 August 2025

**Online Bidding Closes:** 12:00 on Thursday, 14 August 2025

## Conditions of sale for immovable property:

- *Subject to confirmation by the seller.*
- *R 100,000 refundable registration fee to bid online.*
- *10% deposit by way of electronic transfer.*
- *10% commission plus VAT is payable by the purchaser.*
- *Guarantees for balance within 45 days after confirmation.*
- *Occupation on date of registration of transfer of the property.*



# SUBJECT PROPERTY

<b>Subject Property:</b>	Portion 22, 23 & 50 of the Farm Mosterthoek 25, Registration Division Jt, Mpumalanga Province
<b>Total Extent:</b>	± 117, 3587 ha
<b>Zoning:</b>	Agricultural
<b>Rates &amp; Taxes:</b>	± R 1 829.00 p/m

## Improvements

- 2.4 m game fencing
- 2 x houses
- Various boreholes
- Water points
- Roads
- 2 x gravel dams
- Beautiful nature
- Highveld bushveld vegetation
- Solar power system in main dwelling
- All game included



## **AUCTIONEER'S NOTE:**

20km from Lydenburg on the foot of the picturesque Steenkampsberg Mountains!!

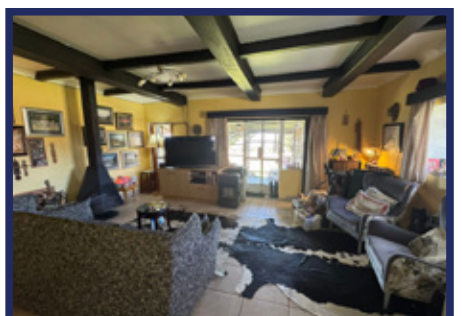




# PROPERTY IMAGE GALLERY

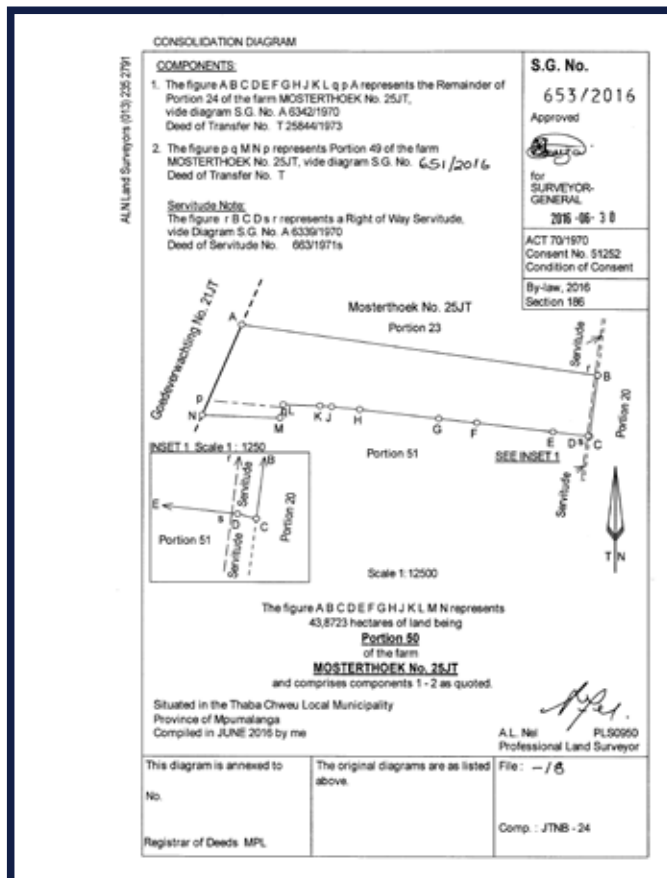
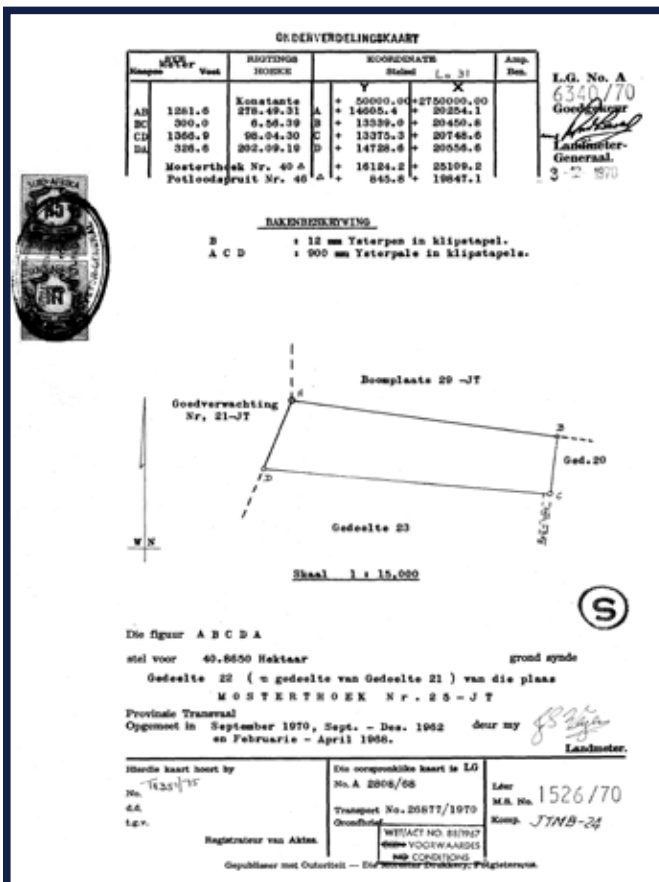
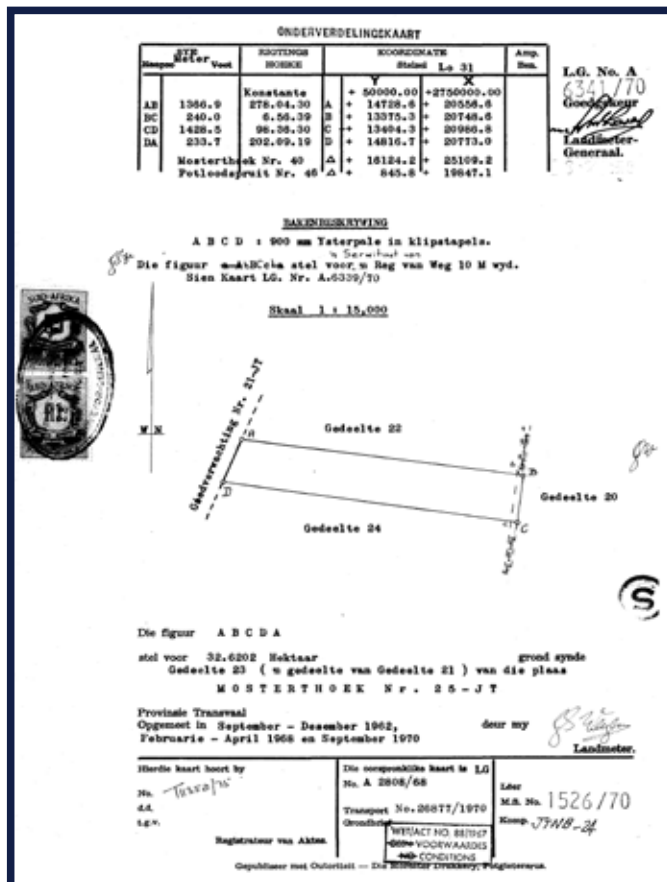






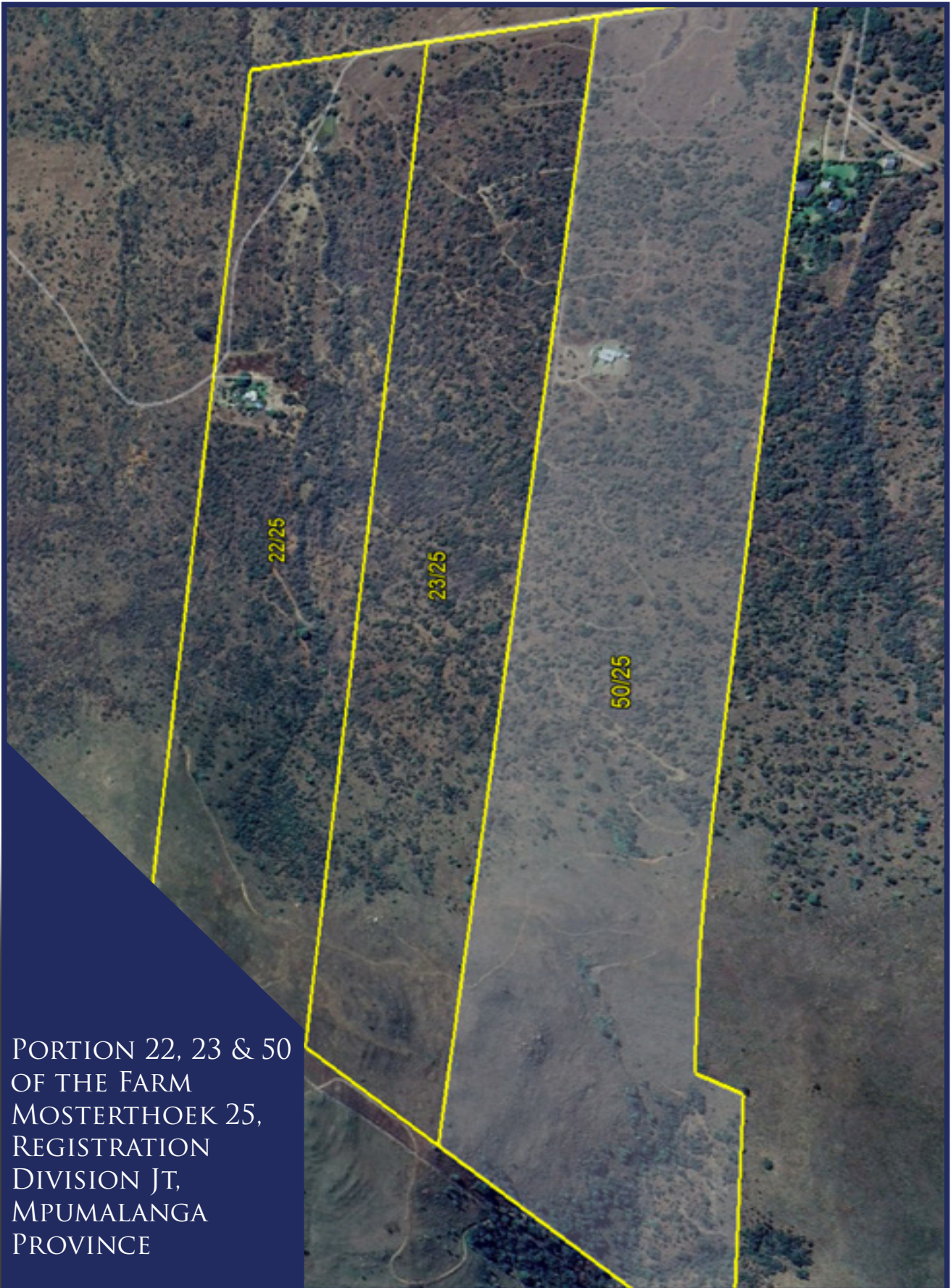


# SG DIAGRAMS





# LOCALITY MAP



PORTION 22, 23 & 50  
OF THE FARM  
MOSTERTHOEK 25,  
REGISTRATION  
DIVISION JT,  
MPUMALANGA  
PROVINCE



*Optimizing Your Assets*

36 Gembok Street, Koedoespoort Industrial, Pretoria  
PO Box 12374, Hatfield, 0028

086 111 8267 • [bells@vansauctions.co.za](mailto:bells@vansauctions.co.za) • [vansauctions.co.za](http://vansauctions.co.za)

**Disclaimer:**

The information supplied in this document has been sourced from various institutions.

Van's Auctioneers does not guarantee the correctness thereof, the information is supplied in good faith and for information purposes only.

Rights reserved to add or withdraw items or lots.